

PNEUMATIC ROLLERS

ART & AP SERIES

EU Stage IIIA / U.S. EPA Tier 3

EU Stage IV / U.S. EPA Tier 4f



150



**Years of
Innovation**
Since 1869

AMMANN

YOUR BENEFITS AT A GLANCE

WHAT CHARACTERISES THE PNEUMATIC ROLLERS
FROM AMMANN?



AP 240

Operating weight: 9560 kg (21,140 lb)
Maximum weight: 24 000 kg (52,910 lb)
Working width: 1986 mm (78.2 in)
Engine: Cummins QSB3.3-C99 – 74 kW (99 HP)
EU Stage IIIA / U.S. EPA Tier 3



ART 240

Operating weight: 9700 kg (21,380 lb)
Maximum weight: 24 000 kg (52,910 lb)
Working width: 1986 mm (78.2 in)
Engine: Deutz TCD3.6 – 74.4 kW (100 HP)
EU Stage IV / U.S. EPA Tier 4f



ART 280

Operating weight: 9700 kg (21,380 lb)
Maximum weight: 28 000 kg (61,730 lb)
Working width: 2040 mm (80.3 in)
Engine: Deutz TCD3.6 – 100 kW (134 HP)
EU Stage IIIA / U.S. EPA Tier 3



ART 280

Operating weight: 9750 kg (21,500 lb)
Maximum weight: 28 000 kg (61,730 lb)
Working width: 2040 mm (80.3 in)
Engine: Deutz TCD3.6 – 100 kW (134 HP)
EU Stage IV / U.S. EPA Tier 4f



PRODUCTIVITY

Ballasting system

Unique ballasting system offers wide range of weight, from 9 to 24 tons (28 tons - only ART 280)

Air-On-Run system

Central inflation system for easy control of tyre pressure

Front isostatic axles with oscillation

Higher stability and increased surface coverage and quality

ERGONOMICS

Cab design

Spacious cab with low sound levels (170° rotating seat - only ART 280) for all-day operator comfort

Simple and reliable dashboard

Intuitive machine control, even with an unskilled operator

Control and information display integrated into steering wheel

Multifunctional display for intuitive machine control & overview, even with unskilled operator (only ART 280)

Visibility

Perfect all-around machine visibility for safety on the jobsite

SERVICEABILITY

Spacious service platforms

Good access to service points

Maintenance-free parts

Reduced risk of machine damage

Ground access to service and maintenance points

Machine serviced from ground, enabling comfort

Design that enables daily maintenance

Easy and fast daily maintenance

“Tyre widths
and arrangements
combine with ballasting
options to make these
rollers stand out.”



READY FOR ANY JOBSITE

TYRE PRESSURES, WEIGHTS EASILY ADJUSTED

Ammann Pneumatic Tyred Rollers excel in multiple applications and on varied materials. Their kneading effect compacts stubborn materials and seals surfaces, too. Easy ballasting allows the machines to be adjusted to the ideal weight for particular jobsites, while tyre pressures can be adjusted from the comfort of the cab. Operators of all experience levels are productive because of the rollers' easy-to-operate, intuitive controls. Excellent visibility helps operators avoid obstructions while delivering compaction to surface edges to provide uniform bearing capacity.

INTRODUCTION

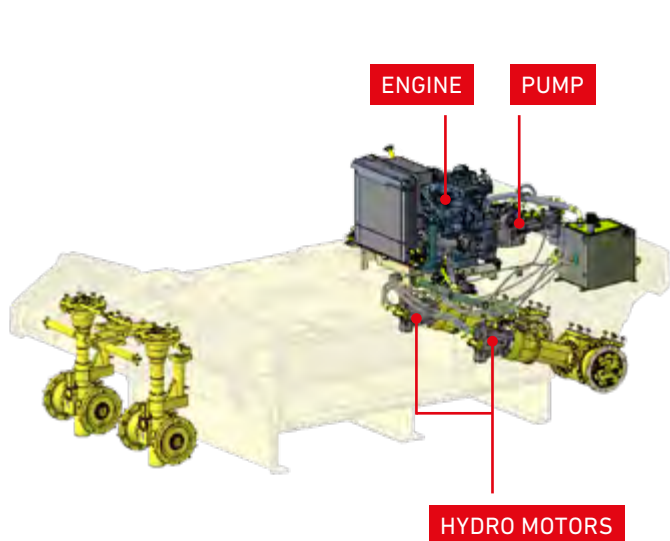
- High productivity and efficiency
- Excellent visibility
- Very easy to operate
- Exceptional operator comfort

PROPULSION

No matter what challenges future jobsites may bring, Ammann Pneumatic Tyred Rollers are built to overcome them. Hydronic and hydrostatic versions help the machines match the applications.

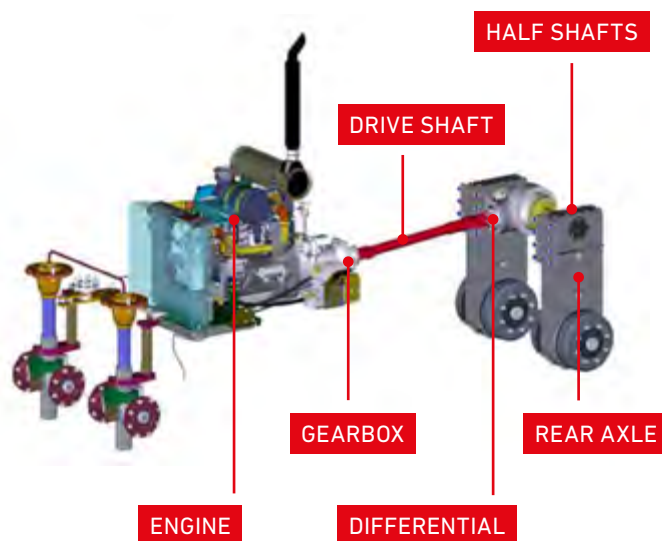
HYDROSTATIC VERSION

Hydrostatic propulsion systems are the best fit on jobsites where extra traction and propulsion are required. These rollers use pump and hydro-motors that control propulsion energy. Traction force can be adjusted electronically, which leads to fuel efficiency. The hydrostatic models enable particularly smooth starts and stops.



HYDRODYNAMIC VERSION

Many Ammann rollers feature hydrodynamic propulsion, a method that creates drive energy mechanically. These systems are mechanically straightforward and enable easy maintenance and long life of core components.



YOUR BENEFITS

DESIGNED FOR COMFORT AND PRODUCTIVITY

DESIGN

Comfort is built into the cabs of Ammann Pneumatic Tyred Roller to improve operator productivity and reduce fatigue. The spacious cabs feature an abundance of glass to optimise visibility to the front, sides and rear. Wide opening of side windows. Control switches are located on the dashboard for convenience and a multifunctional display provides essential engine operating information. Sound levels are low.

CONVENIENCE

Controls are intuitively located, helping keep operators safe and productive. Tyre pressures can be adjusted from inside the cab through the Air-On-Run system. All service points can be accessed from the platform. Filling and draining ports for service fluids are centralised for fast exchange. Engine and coolers compartment is accessible under the bonnet.

FRONT AXLE ISOSTACY AND OSCILLATION

The rigid-framed roller features 4 smooth tyres on each axle. The front, steerable oscillating axle features 2 pairs of wheels that provide the desired kneading effect. The front axle also is isostatic, absorbing bumps and obstacles to enable compaction of uneven surfaces. The rear axle drives the machine. All tyres are strategically arranged to provide thorough coverage.

- Keeps permanent contact of wheels and compacted material
- Isostatic front Axle ± 50 mm
- Oscillating pairs of wheels $\pm 3^\circ$
- Important for the soil compaction – uneven surfaces

WIDE RANGE OF OPTIONS

Easy-to-add thermal aprons transform a machine from a soil roller to an asphalt compactor. Ammann Traction Control (ATC) helps the roller remain productive in difficult underfoot conditions or steep terrain. Air conditioning, warning beacons, emulsion spray unit and a variety of other options also are available.

ENGINE TYPES

Ammann Pneumatic Tyred Roller models feature Tier 4 Final engines for highly regulated countries. Models that meet guidelines in lesser-regulated countries also are available.

FRONT AXLE

3°



BUILT FOR VERSATILITY

ROLLERS PRODUCTIVE IN VARIED APPLICATIONS

Easy ballast additions and reductions make Ammann Pneumatic Tyred Rollers the optimal weight on varied jobsites. Tyre pressures can be adjusted from the cab to ensure proper pressures in diverse materials.

APPLICATIONS

- Medium and large compaction jobsites
- Transportation-related construction – municipal and town roads, motorways, airfields
- Building construction – housing, commercial, industrial

SUB-BASES

Gravel mixtures:

Recommended maximum lift thickness of 280 mm (11 in)

Sub-base course:

Hydraulic. consolidated mixtures up to 150 mm (5.91 in)

Stabilized soils up to 180 mm (7 in)

Loam and clay soils up to 150 mm (5.9 in)

Mixed soils up to 240 mm (9.5 in)

Sand and gravel materials up to 280 mm (11 in)

Sub-grade: Not recommended

Product Application (recomm. 16–28 t)

- Recommended weight over 16 t
- Great compaction effect on stabilized soils
- Very good results on industrial mixtures
- One of the required rollers in cold recycling technology

TOP LAYERS

Wearing course:

15–60 mm (0.59–2.36 in)

Binder layer:

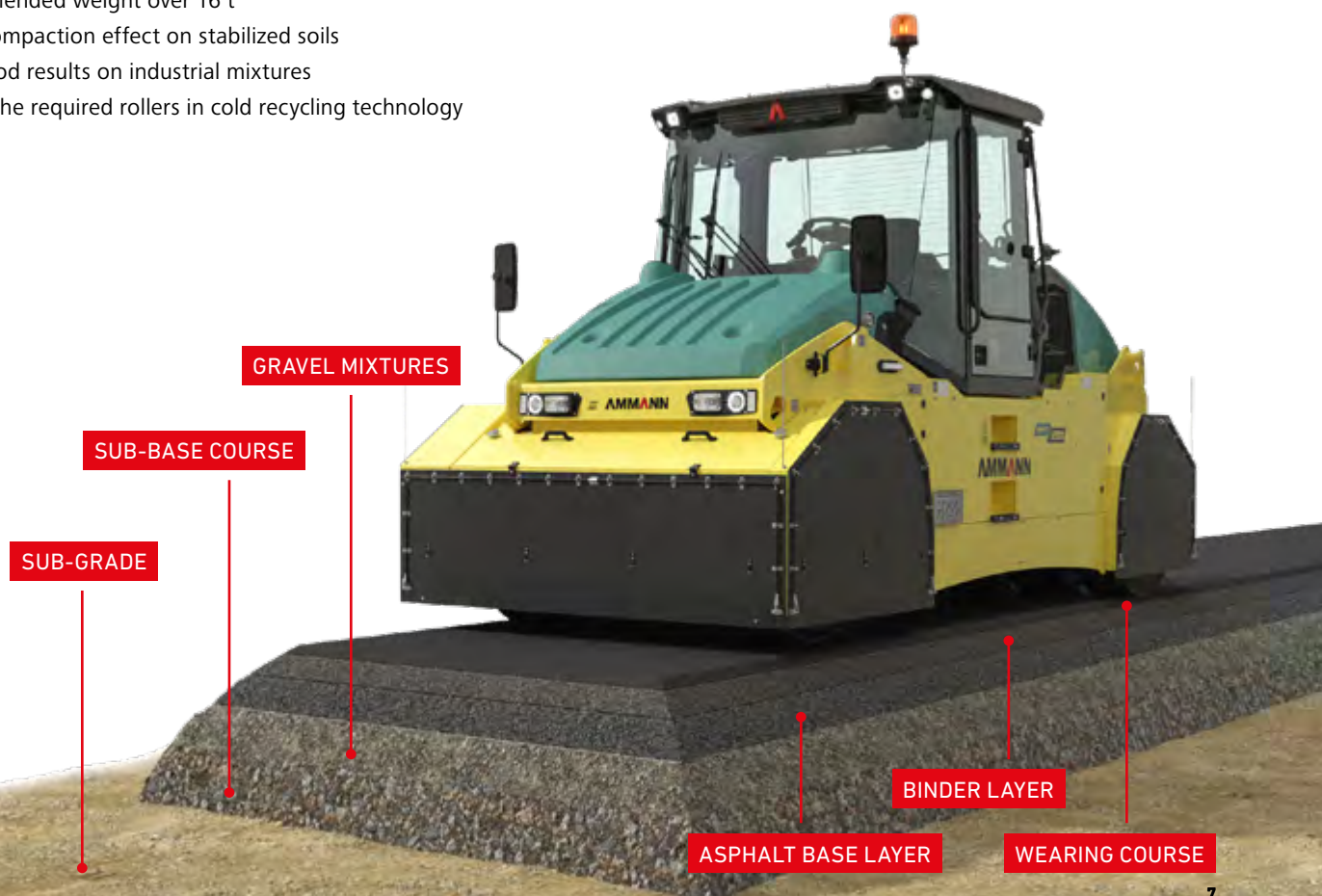
40–100 mm (1.57–3.94 in)

Asphalt base layer:

80–140 mm (3.15–5.5 in)

Product Application (recomm. 9–16 t)

- Recommended weight below 16 t
- Excellent for first passes – static pre-compaction
- Final passes on base and binder – sealing effect



BALLASTING SYSTEM

ART 280 PNEUMATIC TYRED ROLLERS, 9–28 tons

BALLASTING SPACE UP TO 3m³

Ballast can be added or removed to ensure the proper static weight. Space for ballast materials is built into the frame as well as from underneath of the machine, making the adjustment convenient and consistent. Ballast materials include concrete and steel.





**BALLASTING
SPACE UP TO 3m³**



**WATER BALLAST
UP TO 1.7 m³**

INSIDE FRAME

Ballasting blocks: 0.7–10.4 tons

- Empty ballast blocks inside frame
- 0,7 ton / 2 x 0,35t / 2x 0,5m³
- Empty ballast blocks inside frame
- 1,4 ton / 4 x 0,35t / 4x 0,5m³
- Ballast blocks inside frame
- 2,35 ton / 2 x 1,17t
- Ballast blocks inside frame
- 4,7 ton / 4 x 1,17t
- Ballast blocks inside frame
- 5.2 ton / 2x 2,6t
- Ballast blocks inside frame
- 10.4 ton / 4x 2,6t

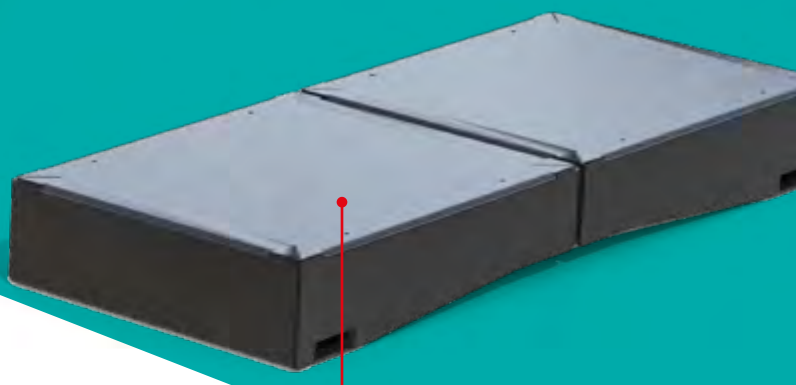
or Water ballast: up to 1.7m³

- Water ballast tanks inside frame
1,8 ton / 2 x 0,9t

UNDER FRAME

Ballasting blocks: 0.8–7 tons

- Empty Ballast blocks under frame
- 0,8 ton / 4 x 0,2t / 4x 0,25m³
- Lower Ballast blocks under frame
- 3,2 ton / 4 x 0,8t
- Lower Ballast blocks under frame
- 7 ton / 4 x 1,75t



**BALLASTING BLOCKS
0.8–7 tons**

OPERATOR COMFORT AND CONTROLS

ABUNDANT SPACE, EASY HANDLING

Operators appreciate comfort, but the business owner benefits, too. Comfort reduces fatigue and helps keep operators focused throughout their shifts. That leads to improved safety and productivity. Convenient controls help operators leverage all the compaction power built into the machine.

WORK STATIONS

Ammann Pneumatic Tyred Rollers feature 2 working stations, depending on the specific model utilised. Common to both station configurations is exceptional visibility, important on all jobsites but particularly when working in tight quarters or against obstacles such as curbs.

AMPLE SPACE

An abundance of space gives operators room for movement and comfort. The space permits the use of more glass to improve visibility and also provides ample room for 2 working stations or a sliding seat, depending on the specific model.

EASY HANDLING

Operators accelerate and decelerate via pedals like those in passenger vehicles. A multifunctional display is prominent and enables easy monitoring of key engine functions.

QUALITY CABS

Ammann cabs are designed to reduce noise and limit vibration to the operator, both key fatigue-fighting factors. The cabs also feature optimal visibility out the front, rear and sides.

INTUITIVE CONTROLS

The controls inside the cab are conveniently located and always within the operator's reach. The controls are intuitive, too, helping operators of all experience levels work productively. Operators can adjust tyre pressures from inside the cab through the Air-On-Run system.

MACHINE SERVICEABILITY

- Access to all service points from platform
- Filling and draining points for service fluids are centralized for easy and fast fluid exchange
- Easy access to all major filtration elements (Engine oil filter, fuel filter, air filter, etc.)
- Accessible and easy cleanable cooler

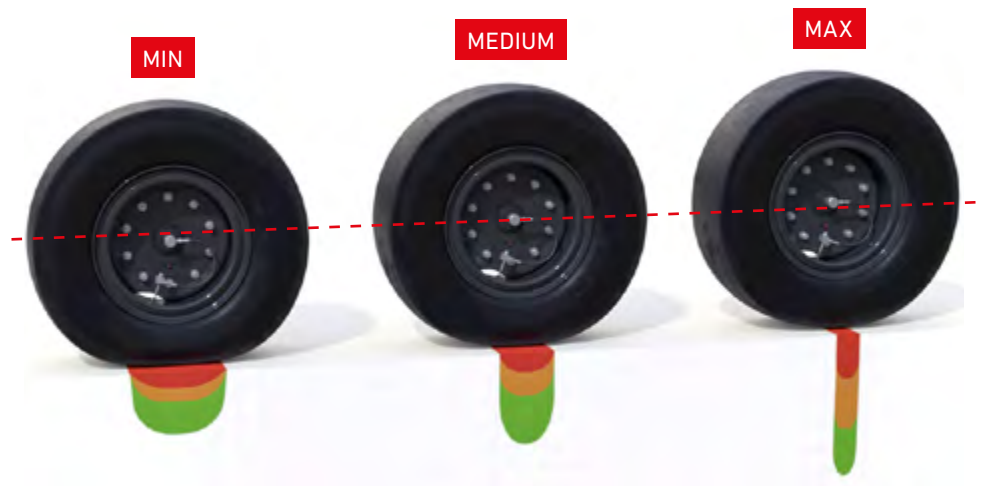
TYRE GROUND PRESSURE

- High tyre pressure - high ground pressure, higher depth effect, pushes material down and out
- Low tyre pressure - low ground pressure, bigger contact area, better for flattening
- Wheel overlap manipulates mat under and between tyres
- Regulation of air pressure via central inflation system Air-On-Run
- Operator can easily adjust tyre pressure to match the jobsite

“Operators of all experience levels are productive because of the intuitive controls.”

COMPACTION METHOD

- Static weight effect of roller
- Pressure effect of tyres



HYDROSTATIC ROLLER

A rotating and sliding seat helps the operator achieve optimal views to all sides of the rollers. Control switches are placed on the dashboard in front of the operator and are easily reached no matter where the seat is positioned. The steering column tilts and is easily adjusted.



HYDRODYNAMIC ROLLER

Hydrodynamic Ammann Pneumatic Tyred Rollers feature 2 identical working stations. Operators simply move to the seat that maximises their visibility. Dashboard controls are easy to access from either seat. A power shift gearbox with easy control enables smooth transitions. Acceleration or deceleration is accomplished through customer-friendly pedals similar to those used on passenger vehicles.

OPTIONS

CUSTOMISE YOUR ROLLER

AMMANN TRACTION CONTROL

Ammann Traction Control (ATC) helps the rollers remain productive in difficult underfoot conditions or steep terrain.



BALLASTING (ART/AP 240)

The “easy load” system, with 4 ballasting boxes in a rack beneath the frame, enables simple and safe adjustment of the machine’s weight. The roller can work at the custom weight that is most desirable for the particular application and conditions.

THERMAL APRONS

These options are easily added when working with asphalt. The thermal makeup of the aprons provides substantial heat retention and helps the tired rollers eliminate asphalt pickup and provide the desired sealing effect when working in paving applications.



EDGE CUTTER

Adding an edge cutter to the roller when working in asphalt applications can eliminate the need for an additional machine to enter the compaction process.



WARNING BEACON

The addition of a warning beacon provides an extra measure of safety, ensuring the roller is spotted by other operators at night and on larger jobsites.

OTHER OPTIONS

Extra features such as air conditioning, a radio with CD player, Ammann toolkit, thermometer, radial tyres, backup alarm and telematics also are available..

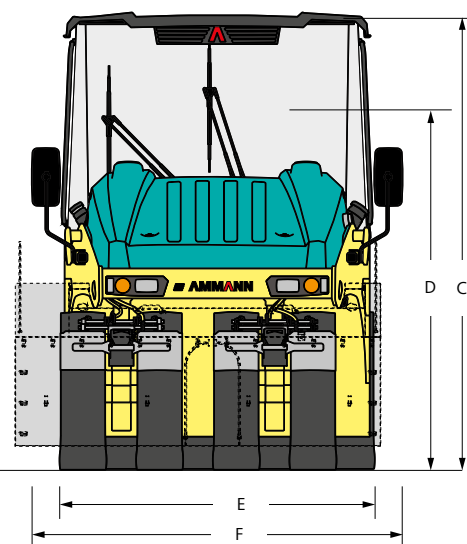
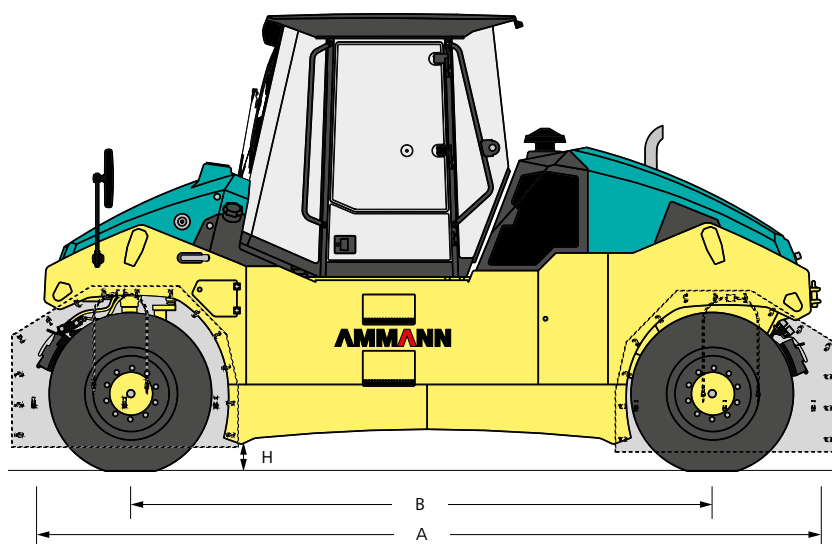


DIMENSIONS

ART & AP PNEUMATIC ROLLERS



	AP 240 T3	ART 240 T4f	ART 280 T3	ART 280 T4f
A MACHINE LENGTH	5020 mm (197.7 in)	5030 mm (198,1 in)	5040 mm (198.4 in)	5040 mm (198.4 in)
A MACHINE LENGTH (THERMAL APRONS)	5780 mm (227.6 in)	5780 mm (227,6 in)	5440 mm (214.2 in)	5440 mm (214.2 in)
B WHEELBASE	3800 mm (149.7 in)	3780 mm (148,9 in)	3800 mm (149.6 in)	3800 mm (149.6 in)
C MACHINE HEIGHT	3110 mm (122.5 in)	3130 mm (123,3 in)	3000 mm (118.1 in)	3000 mm (118.1 in)
D MACHINE HEIGHT (REMOVED ROPS)	2450 mm (96.5 in)	2380 mm (93,8 in)	–	–
E WORKING WIDTH	1986 mm (78.2 in)	1986 mm (78,2 in)	2040 mm (80.3 in)	2040 mm (80.3 in)
F MACHINE WIDTH	2100 mm (82.7 in)	2100 mm (82,7 in)	2420 mm (95.3 in)	2420 mm (95.3 in)
F MACHINE WIDTH (THERMAL APRONS)	2310 mm (91 in)	2310 mm (91 in)	2440 mm (96.1 in)	2440 mm (96.1 in)
H GROUND CLEARANCE	–	280 mm (11 in)	180 mm (7.1 in)	180 mm (7.1 in)



SPECIFICATIONS

ART & AP PNEUMATIC ROLLERS



AP 240 T3

ART 240 T4f

ART 280 T3

ART 280 T4f

MISCELLANEOUS

BRAKES OPERATING	Drum	Drum	Hydrostatic	Hydrostatic
BRAKES PARKING	Mechanical disc	Mechanical disc	Mechanical multiple-disc	Mechanical multiple-disc
BRAKES EMERGENCY	Mechanical disc	Mechanical disc	Mechanical multiple-disc	Mechanical multiple-disc
TYPE OF DRIVE	Hydrodynamic	Hydrodynamic	Hydrostatic	Hydrostatic
NUMBER OF DRIVEN WHEELS	4	4	4	4
OSCILLATION ANGLE	3°	3°	3°	3°
ANGLE OF STEERING	32°	32°	32°	32°
TYPE OF WATERING	Pressure	Pressure	Pressure	Pressure
FUEL TANK CAPACITY	250 l (66 gal)	250 l (66 gal)	250 l (66 gal)	250 l (66 gal)
WATER FOR TYRE WATERING	460 l (121.5 gal)	390 l (103 gal)	400 l (105,7 gal)	400 l (105,7 gal)
VOLTAGE	12 V	24 V	24 V	24 V

ENGINE

MANUFACTURER	Cummins QSB 3.3-C99	Deutz TCD 3.6 L4	Deutz TCD 3.6 L4	Deutz TCD 3.6 L4
POWER ACCORDING TO ISO 3046-1	74 kW (99 HP)	74.4 kW (100 HP)	100 kW (134 HP)	100 kW (134 HP)
MAXIMUM TORQUE	412 Nm (304 ft lb) 1400 rpm	410 Nm (302 ft lb) 1600 rpm	500 Nm (369 ft lb) 1600 rpm	500 Nm (369 ft lb) 1600 rpm
ENGINE COMPLIES WITH EMISSION REGULATIONS	EU Stage IIIA, U.S. EPA Tier 3	EU Stage IV, U.S. EPA Tier 4f	EU Stage IIIA, U.S. EPA Tier 3	EU Stage IV, U.S. EPA Tier 4f
NUMBER OF CYLINDERS	4	4	4	4
COOLING SYSTEM OF ENGINE	Liquid	Liquid	Liquid	Liquid

WEIGHT & DRIVING CHARACTERISTICS

OPERATING WEIGHT	9590 kg (21,140 lb)	9700 kg (21,380 lb)	9700 kg (21,380 lb)	9750 kg (21,500 lb)
MAXIMUM WEIGHT	24 000 kg (52,910 lb)	24 000 kg (52,910 lb)	28 000 kg (61,730 lb)	28 000 kg (61,730 lb)
MAX. TRANSPORT SPEED	19 km/h (11.8 MPH)	19 km/h (11.8 MPH)	19 km/h (11,8 MPH)	19 km/h (11,8 MPH)
CLIMBING ABILITY	25 %	25 %	30%	30%
TURNING RADIUS INNER (EDGE) LEFT	6180 mm (243.3 in)	6200 mm (244,1 in)	5080 mm (200 in)	5080 mm (200 in)
NUMBER OF FRONT WHEELS	4	4	4	4
NUMBER OF REAR WHEELS	4	4	4	4
SIZE OF TYRES	11.00 × 20"	11.00 × 20"	11.00 × 20"	11.00 × 20"

SERVICE

A NETWORK TO SUPPORT YOU

No matter where you are, Ammann-trained technicians and parts are nearby. Ammann dealers provide well-trained service technicians who can help you, whether it's an emergency or time for preventive maintenance. The vast Ammann network ensures there is a nearby technician who understands your language and your technical needs. Parts availability and ease of ordering are always Ammann priorities.

HOTLINE SUPPORT

Ammann experts are ready to answer your technical questions 24 hours a day, seven days a week. The hotline team is highly trained and experienced. Representatives can talk you through the challenges – in various languages – to help keep your machine productive.

SERVICE APP

The service app for Ammann machines impresses machine operators who are already benefiting from the advantages of the free application. The easy-to-use app provides machine operators working on site quick and uncomplicated access to machine documentation.

SERVICE VIDEOS

Sometimes a video tells the story best. That's why you'll find a variety of service videos that walk you through service and maintenance processes.

QR CODE

Many maintenance kits feature QR codes that link to videos with helpful demonstrations that walk you or your technician through the process. The videos tell the story without dialogue so customers anywhere in the world can understand.

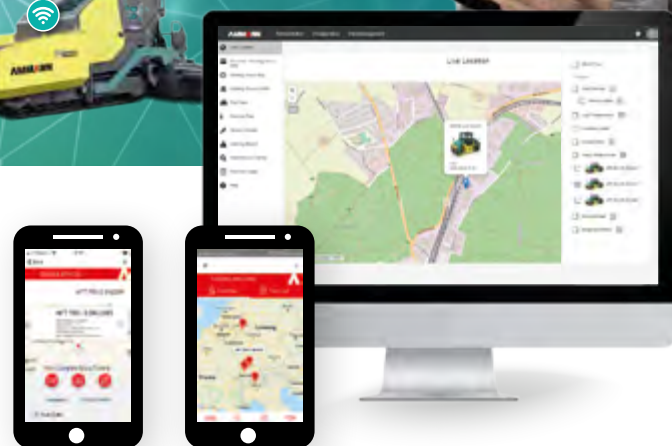


AMMANN SERVICELINK

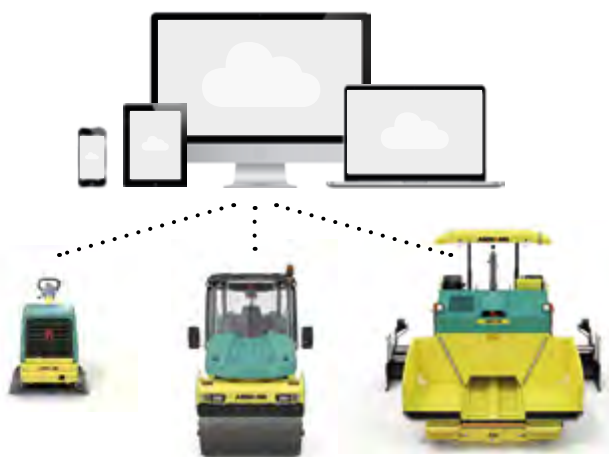


SERVICELINK

THE DIGITAL FLEET MANAGEMENT SOLUTION



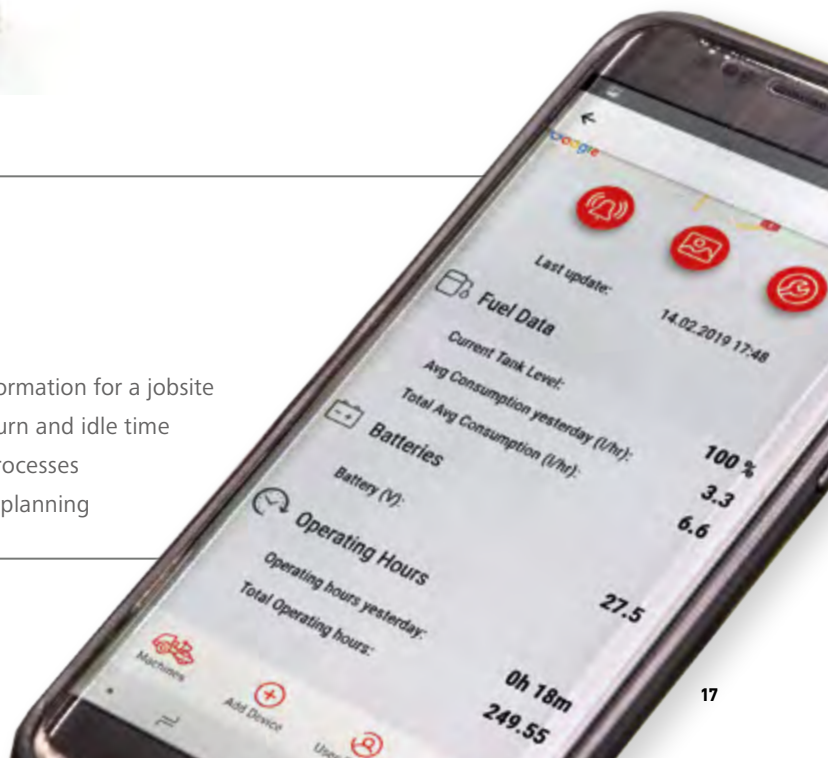
Manage your equipment – anytime, anywhere – with Ammann ServiceLink. This comprehensive fleet system provides key data for light compaction equipment, heavy compaction machines and asphalt pavers. You can choose which machines to track.



- Ammann ServiceLink utilises telematics that give you the locations of the machines, hours of usage and other essential information. You'll have access to data that will keep your machines running – and make them more productive, too.
- Ammann ServiceLink makes it easy to plan and schedule the maintenance that protects your fleet.

HIGHLIGHTS

- Easy to manage
- Light equipment does not require a machine battery
- Great for rental fleets
- GPS tracking for location, efficiency and productivity information for a jobsite
- Full machine telematics to assess machine usage, fuel burn and idle time
- Machine documentation to help analyse and improve processes
- Easy management of service intervals and maintenance planning



TRAINING

ENHANCE YOUR PERFORMANCE

If Ammann machine training was summarised in a single word, it might well be “comprehensive.” The training includes multiple expertise levels and modules to benefit all skill levels.

TRAINING WORLDWIDE

Ammann product and application experts are ready to provide the training you need, no matter where you are. The global nature of Ammann ensures an expert is always near you – ready to offer instruction that ranges from the basics to the specifics relevant to your geographic area. The training can take place at an Ammann facility, your business – or even on a jobsite.

KEY TEACHING THEMES CONNECT ALL EFFORTS, NO MATTER WHERE THEY OCCUR

A good balance. Training often combines a traditional classroom setting with hands-on machine experience. Ammann application experts also can offer instruction on your jobsite.

Training typically includes students from other industry businesses. Participants say conversations with their peers – and learning how they overcome challenges – are other key benefits.

Learn in your language. Lessons are taught in many languages, ensuring your team understands key terms and lessons and makes the most of your training investment.



SPARE PARTS

You can only earn money when your equipment is working. That's why Ammann does everything possible to ensure you have the parts where and when you need them. Those efforts include easy online ordering to avoid confusion and enable tracking, and efficient logistics and availability to help parts reach you quickly.

WEARING KITS

Some machines handle abrasive materials in demanding applications. While wear is inevitable, downtime can be limited. Wearing kits make replacement of these parts efficient and cost-effective. All the necessary parts – big and small – are in a single box to keep you organised and efficient and to ensure the machines are quickly back up and running.

EMERGENCY KITS

Emergency kits prevent little frustrations from becoming bigger issues that can shut down a machine and even a jobsite. These kits include parts such as switches, fuses and valve coils that are simple and fast to change yet still can cause significant problems if not operating properly. The kits easily fit in the trunk or bed of a vehicle so they're on hand when needed. A crew-member with a bit of technical knowledge can handle this work on the jobsite. These repairs take 2 hours or less.



MAINTENANCE KITS

Preventive maintenance is crucial to efficient operation and service life of machines. The easier the maintenance, the more likely it is to be completed. Maintenance kits make the upkeep simple. Parts associated with a particular maintenance process are in a single box with a single part number.

BROCHURE WITH ALL KITS

We have a prospect with all kits, and their part numbers are available for you. Just contact your parts consultant and have a digital or hardcopy sent to you.



For additional product information
and services please visit:
www.ammann.com

